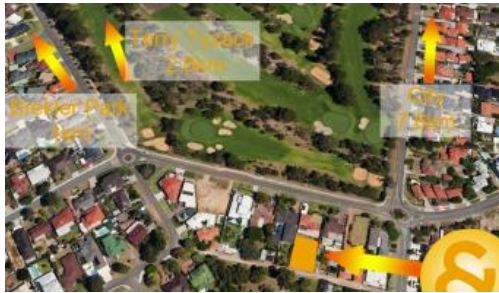


Leased



OFFERED FOR THE FIRST TIME THIS CENTURY

Prominent corner building in prime location on 392sqm block.

Net Lettable Area 220sqm

Rent \$55,000 Per Annum

Variable Outgoings \$11,933.92 Per Annum

Used as a Real Estate Agency since 1981 but suitable for a plethora of alternate uses.

Onsite parking for 6 cars.

The above information provided has been furnished to us by the vendor/s. We have not verified whether or not that information is accurate and do not have any belief in one way or the other in its accuracy. We do not accept any responsibility to any person for its accuracy and do no more than pass it on. All interested parties should make and rely upon their own inquiries in order to determine whether or not this information is in fact accurate.

 6  392 m2

Price \$55,000 Plus Outgoings
Per Annum Plus GST

Property Type Commercial

Property ID 7948

Land Area 392 m2

Office Area 220 m2

Agent Details

Larry Gallagher - 0418 946 357

Office Details

Xceed Real Estate - Commercial
Leasing & Sales
Level 8, 3 Hasler Road Herdsman,
WA, 6017 Australia
08 9207 2088

XCEED 
REAL ESTATE