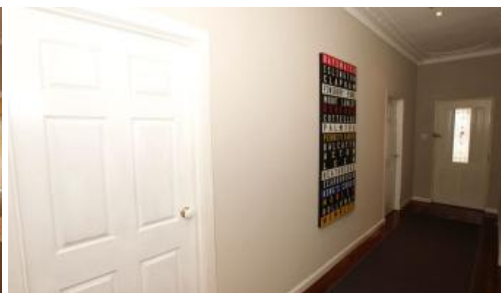
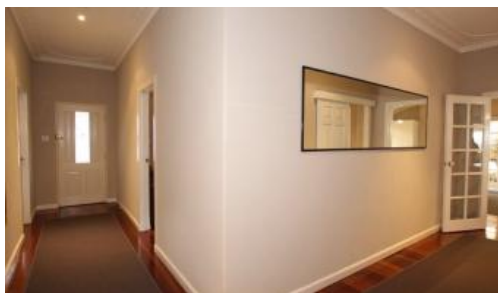


Sold



170 Shaftesbury Avenue, Bedford



CHARM, WARMTH, AND TRADITIONAL ELEGANCE

Renovated character home with high ceilings polished jarrah floors and open fire. Accommodation includes formal lounge, 3 double bedrooms, well appointed open plan kitchen with adjoining meals area strategically placed for alfresco area.

Other features include bore reticulated gardens, full security, ducted air-conditioning and foxtel dish.

Offered for sale with vacant possession however sitting tenant will sign new lease if required.

Priced for quick sale call Larry Gallagher now to inspect 0418 946 357

The above information provided has been furnished to us by the vendor/s. We have not verified whether or not that information is accurate and do not have any belief in one way or the other in its accuracy. We do not accept any responsibility to any person for its accuracy and do no more than pass it on. All interested parties should make and rely upon their own inquiries in order to determine whether or not this information is in fact accurate.

3 1 2 470 m2

Price	SOLD
Property Type	Residential
Property ID	7909
Land Area	470 m2

Agent Details

Larry Gallagher - 0418 946 357

Office Details

Xceed Real Estate - Commercial
Leasing & Sales
Level 8, 3 Hasler Road Herdsman,
WA, 6017 Australia
08 9207 2088

XCEED 
REAL ESTATE