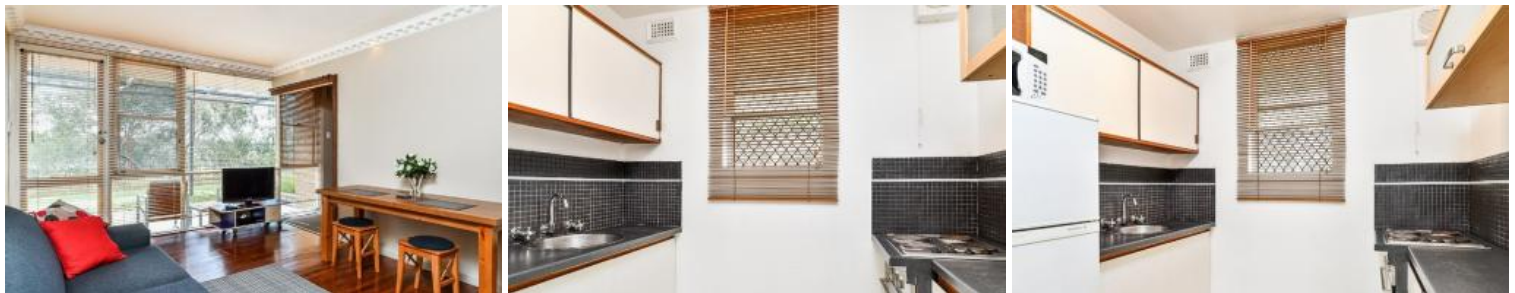


Leased



6A, 66 Great Eastern Highway, Rivervale



## Absolute River Views!

You just can't get much closer to the river than this, in fact, if it wasn't for the giant gum trees you could just about cast your fishing line in the water from your back porch.

This is the complete lifestyle package- low maintenance, river views, walks and bike rides along the pathways directly adjacent your home, easy access to the city and the peace that comes from looking over this amazing picturesque view.

- \* Spacious bedroom with open plan feel
- \* Bathroom/en-suite freshly renovated
- \* Laundry complete with modern washer and dryer
- \* Decorative cornice with mood setting down-lighting
- \* Floor to ceiling windows to maximise river views
- \* Generous kitchen area with electric cooking
- \* Secure and private complex

Brilliant location with shops, restaurants and public transport all within walking distance. Not too far away is Burswood Casino, city life and Belmont Forum.

1 bed 1 bath 1 car

<b>Price</b>	\$250 per week
<b>Property Type</b>	Rental
<b>Property ID</b>	788

### Agent Details

Petr Seidel - 08 9207 2088

### Office Details

Xceed Real Estate - Property Management  
Level 8, 3 Hasler Road Herdsman, WA, 6017 Australia  
08 9207 2088

**XCEED**   
REAL ESTATE

*The above information provided has been furnished to us by the vendor/s. We have not verified whether or not that information is accurate and do not have any belief in one way or the other in its accuracy. We do not accept any responsibility to any person for its accuracy and do no more than pass it on. All interested parties should make and rely upon their own inquiries in order to determine whether or not this information is in fact accurate.*

