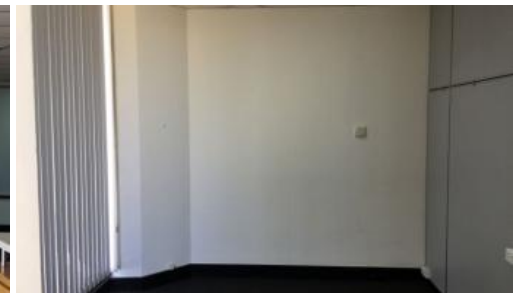


Leased



Prime Ground floor Location / Street Front Office one off the corner of Stirling St facing into Spencer Street.

- Great exposure located one suite off the corner of Spencer & Stirling Streets
Two suites of approximately 149 sqm combined facing into Spencer St, on ground floor.
- Opposite Centrepont City Car Park which has 2 hours free parking.
- Air-conditioned

For Further information, please contact Stuart Paterson Xceed Commercial
Mob: 0433199676

The above information provided has been furnished to us by the vendor/s. We have not verified whether or not that information is accurate and do not have any belief in one way or the other in its accuracy. We do not accept any responsibility to any person for its accuracy and do no more than pass it on. All interested parties should make and rely upon their own inquiries in order to determine whether or not this information is in fact accurate.

Price	\$2,793.75 pcm Plus Outgoings + GST
Property Type	Commercial
Property ID	7650
Office Area	149 m2

Agent Details

Office Details

Xceed Real Estate - Commercial
Leasing & Sales
Level 8, 3 Hasler Road Herdsman,
WA, 6017 Australia
08 9207 2088

