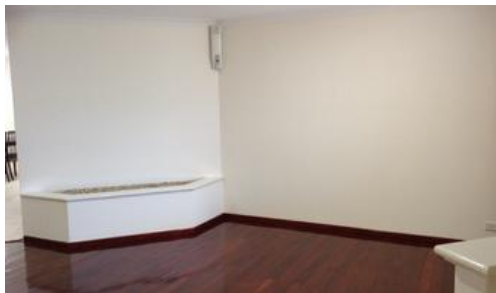


Leased



6 Ashdale Boulevard, Darch



Large Family Home

This family home is situated within walking distance to Ashdale High School, Ashdale Primary School and Kingsway Christian College, Shopping, transport and the Kingsway Bar and Bistro on your doorstep. Loads of nearby parks and 5 minutes from the Kingsway Indoor Stadium and sporting facilities.

The home has four bedrooms with the enormous master bedroom having a walk in robe and ensuite.

There is plenty of living areas, as it has a formal lounge, spacious living area, dining area and also a sunken games room.

The chefs kitchen has loads of bench space and storage, and a large fridge recess.

Ducted air conditioning throughout.

Keep the costs down with the Solar Power Generation System.

The property also boasts a large undercover entertaining area.

The back yard is also paved and has enough room for the kids to play soccer, cricket and plenty of room for the play equipment.

Garden shed for the tools or toys.

 4  2  2

Price	\$450 per Week
Property Type	Rental
Property ID	4184

Agent Details

Alison Thomson - 08 9207 2088

Office Details

Xceed Real Estate - Property Management
Level 8, 3 Hasler Road Herdsman,
WA, 6017 Australia
08 9207 2088

XCEED 
REAL ESTATE

The above information provided has been furnished to us by the vendor/s. We have not verified whether or not that information is accurate and do not have any belief in one way or the other in its accuracy. We do not accept any responsibility to any person for its accuracy and do no more than pass it on. All interested parties should make and rely upon their own inquiries in order to determine whether or not this information is in fact accurate.