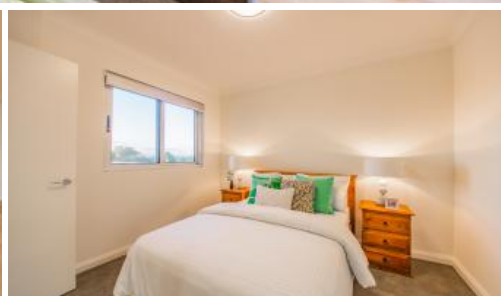


Just Listed



15/267 Fulham Street, Cloverdale



Stylish, Sun-Filled Living with Tree-Top Views and Unmatched Convenience

First home buyers or investors will love the stylish finishes and practical extras within this sun-filled, third-floor apartment just minutes on foot to Cloverdale Primary School and Belmont Forum Shopping Centre.

Admire the tree-top surrounds from the open plan living, dining and kitchen, complete with smart timber flooring, recessed lighting and contemporary pendants, sliding glass doors leading out to a private terrace and a bright, airy ambience.

The carpeted bedrooms enjoy split system air conditioning, mirrored built-in robes and a walk in robe to main bedroom. Both bathrooms have a vanity, frameless rain showers and WC, while a good-sized separate laundry with storage exemplifies the wise use of space within this home. The kitchen is a stand-out, beautifully renovated with double sinks, an electric Bosch 600mm oven and ceramic cooktop, Vedastone engineered quartz benchtops, an eye-catching tiled splashback, top and bottom cabinetry, and a breakfast bar. Adjoining is the sunny living and dining, kept cool all summer with split-system air conditioning.

When it's time to enjoy the view, open the glass doors onto a private and covered terrace with zero-maintenance artificial grass, the perfect place for evening drinks as the sun goes down. Downstairs, find undercover parking for one vehicle, a super neat communal paved alfresco area and BBQ,

🛏 3 🚶 2 🚗 1

Price From Mid \$700,000's

Property Type Residential

Property ID 33282

Agent Details

Adam Whitford - 0406 616 608

Brynard Stander - 0400 000 000

Office Details

Xceed Real Estate - Sales
Level 8, 3 Hasler Road Herdsman,
WA, 6017 Australia
08 9207 2088

XCEED 
REAL ESTATE

intercom for visitors, and a 4sqm storage room. As a huge bonus, each unit is allotted one solar panel to assist with household bills.

Small families will love that Cloverdale Primary School is just 10 minutes on foot, while the bus stops of Abernethy Road are a few hundred metres down the road. Woolworths, K Mart, Big W and various cafés and restaurants abound at Belmont Forum, only a six-minute walk away. City commuters can reach the CBD in around 15 minutes, while Carlisle Station is under 10 minutes by car. Surrounding are a host of leafy green areas, such as Arlunya Park and the lakes and play areas of Faulkner Park. For a move-in-ready, low maintenance home with various extras that make everyday life that little bit easier, contact Adam Whitford on 0406 616 608 or Brynard Stander on 0428 169 339.

Features include:

- 3 bedrooms, 2 bathrooms
- Open plan living/dining
- Third floor with tree-top views
- Sunny private terrace (1 bedroom with direct access)
- Built-in robes to 2 bedrooms and walk in robe to main
- Electric Bosch 600mm oven and ceramic cooktop
- Vedastone engineered quartz benchtops,
- Timber flooring in living
- Split-system air conditioning in bedrooms and living
- 1 parking space
- Landscaped communal gardens, BBQ area
- Contemporary finishes
- Security gate to complex
- Solar panels (1 panel per unit to help reduce electricity costs)
- 4sqm storeroom

Location (approx. distances):

- 290m Bus stop on Abernethy Road
- 300m Arlunya Park
- 450m Belmont Forum Shopping Centre
- 650m Cloverdale Primary School
- 800m Faulkner Park
- 900m Belmont City College
- 3.1km East Perth riverside parks
- 4.3km Carlisle Train Station
- 10.3km Perth CBD

Disclosure Statement for Advertisement

The photos featured in this advertisement pertain to Unit 16, which is situated on Level 3 of the property. It is important to note that the floor plan and layout of Unit 15 are identical to that of Unit 16, located on Level 3. While the images and description are representative of Unit 16, please be aware that they also accurately depict the layout and floor plan of Unit 15 on Level 3.

Buyers and interested parties should be aware of this similarity in layout

between the units on the same level. Any questions or requests for further information regarding the specific details of the unit are welcome, and we are committed to providing complete transparency and accurate information.

The above information provided has been furnished to us by the vendor/s. We have not verified whether or not that information is accurate and do not have any belief in one way or the other in its accuracy. We do not accept any responsibility to any person for its accuracy and do no more than pass it on. All interested parties should make and rely upon their own inquiries in order to determine whether or not this information is in fact accurate.