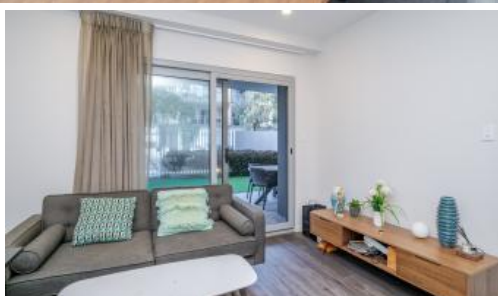


Just Listed



6, 5 Rowe Avenue, Rivervale



Live the Riverena Apartment Dream!

Introducing this contemporary and spacious apartment in Riverena in central Rivervale. With one bedrooms, one bathroom, excellent resident amenities and one secure parking bay, it's perfect for first home buyers, FIFO workers or investors looking for a convenient and comfortable apartment lifestyle.

As you enter the apartment, you are welcomed with gleaming laminated timber flooring, complemented by stylish stone benchtops in the kitchen and bathroom. Ideal for entertaining, you'll enjoy dining indoors, on your private alfresco terrace, or utilising the fantastic communal BBQ and dining amenities.

Reverse-cycle air conditioning in the living area ensures a comfortable environment all year round. In the kitchen, find stainless steel appliances, including a fridge, induction cooktop and under-bench oven, sleek glass splashbacks and ample storage.

The apartment has one secure car bay, providing occupants peace of mind and convenient parking. There's also an impressive range of premium resident facilities, enjoy access to the gym, and swimming pool with BBQ facilities, making this an ideal place for those who like to stay active or enjoy entertaining outdoors.

You'll appreciate the convenient location of this apartment, boasting quick access to Crown Entertainment Complex, Burswood Train Station, Victoria

 1  1  1

Price From \$569,000
Property Type Residential
Property ID 33225

Inspection Times

Sat 13 Jun, 2:00 PM - 2:30 PM

Agent Details

Kenny Poi - 0481 340 343

Office Details

Xceed Real Estate - Sales
Level 8, 3 Hasler Road Herdsman,
WA, 6017 Australia
08 9207 2088

XCEED 
REAL ESTATE

Park shopping, dining, and bars. Great Eastern Highway, the Graham Farmer Freeway and Orrong Road are also within easy reach, providing convenient transport links to the city, airport and beyond.

For a hassle-free lifestyle with every amenity within reach, and leafy Cracknell Park and the Swan River on your doorstep, look no further - contact Kenny Poi from Xceed Real Estate today on 0481 340 343.

Features include:

- Spacious 1 bed, 1 bath apartment
- Generous alfresco terrace
- Walk-in robes in bedroom
- Reverse-cycle A/C in the living area
- Modern kitchen with stainless steel appliances
- Stone benchtops in the kitchen and bathrooms
- Laminated timber flooring in the living, dining and entry
- Private laundry (in bathroom) with washer and dryer
- 1 x secure car bay
- Swimming pool, gymnasium,
- Common room with pool table and kitchen
- Alfresco dining with BBQ facilities

Location (approx. distances):

- 200m Cracknell Park and the Swan River
- 720m Orrong Road/Farmer Freeway access
- 900m Burswood Station
- 1.3km Optus Stadium
- 1.5km Crown Entertainment Complex
- 2km Albany Highway cafe strip
- 3.5km Perth CBD
- 8km Perth Airport (T1&2)

The above information provided has been furnished to us by the vendor/s. We have not verified whether or not that information is accurate and do not have any belief in one way or the other in its accuracy. We do not accept any responsibility to any person for its accuracy and do no more than pass it on. All interested parties should make and rely upon their own inquiries in order to determine whether or not this information is in fact accurate.