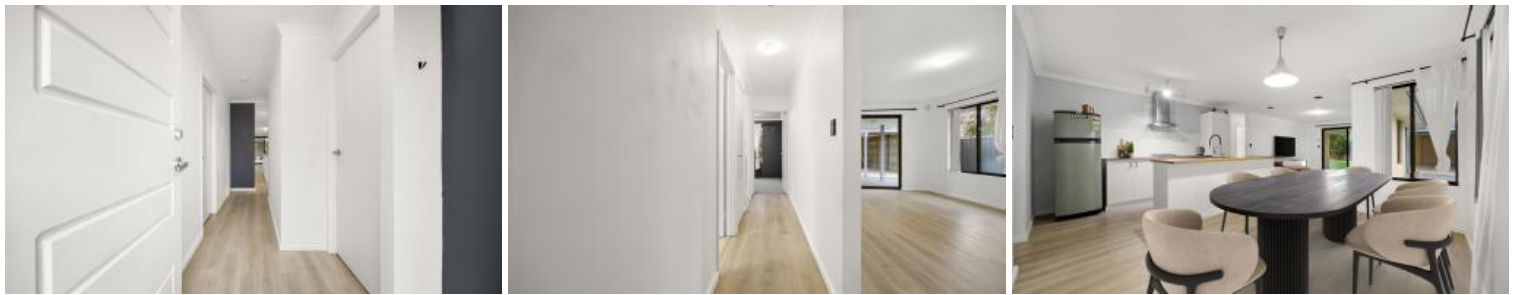


Sold



8 Paludosa Link, Banksia Grove



Move-in ready modern living

AHSAN presents you this contemporary four-bedroom, two-bathroom home presents a sensational opportunity for families, first-home buyers or professionals seeking a low-maintenance lifestyle.

Built in 2010 and designed with modern family living in mind, this property places the modern kitchen at the heart of the home, within an open-plan layout that seamlessly blends living and dining. This light-filled zone creates a welcoming hub for relaxing and entertaining, enhanced by a natural flow out to alfresco dining within a fully enclosed garden.

The easy-care garden offers flexibility, whether you're seeking a lock-and-leave option or an outdoor space perfect for gatherings with your friends and family. This home is not only aesthetically appealing but also functional for busy lifestyles, leaving you more downtime to unwind.

Positioned within a family-friendly suburb, you're within walking or cycling distance of Joseph Banks Secondary College, Banksia Grove Primary School and Grandis Primary School. You're also around the corner from Bentham Park and Discovery Park, where you'll find playgrounds, walking trails and an abundance of open green space.

Falling under the dynamic City of Wanneroo, you have a range of amenities, including Banksia Grove Shopping Centre, Carramar Golf Course, Wanneroo Botanic Gardens and Mini Golf, Lakeside Joondalup Shopping Centre and Edith Cowan University. Within a 15-minute drive, you have Mindarie Marina

🛏️ 4 🚿 2 🚗 2 📏 343 m²

Price SOLD for \$852,000
Property Type Residential
Property ID 33016
Land Area 343 m²
Floor Area 130 m²

Agent Details

Ahsan Mustafa - 0420 270 173

Office Details

Xceed Real Estate - Sales
Level 8, 3 Hasler Road Herdsman,
WA, 6017 Australia
08 9207 2088

XCEED 
REAL ESTATE

and kilometres of pristine coastline to explore with all that free time this home presents.

Property features:

- Four bedrooms, two bathrooms
- Spacious open-plan living and dining leading to alfresco dining
- Contemporary kitchen with timber countertops, stainless steel appliances (gas cooktop, rangehood, oven) and an island bench with seating
- Patio under the main roof within easy-care gardens
- Primary bedroom with split-system air-conditioning, an ensuite and a walk-in robe
- Family bathroom with a bathtub
- Separate laundry with external access
- Light and airy modern décor
- Security screens
- Solar panels
- Double lock-up garage
- 343sqm low-maintenance corner block
- 2010 brick and tile construction

Location highlights:

- 350m to Joseph Banks Secondary College
- 350m to Discovery Park
- 800m to Banksia Grove Shopping Centre
- 1.2km to Banksia Grove Primary School
- 1.3km to Grandis Primary School
- 2.5km to Carramar Golf Course
- 3.7km to Wanneroo Botanic Gardens and Mini Golf
- 4km to Lake Joondalup Nature Reserve
- 7.6km to Lakeside Joondalup Shopping Centre
- 8.3km to Edith Cowan University
- 11km to Mindarie Marina

Please don't hesitate to contact Ahsan Mustafa on 0402 270 173 or ahsan@xceedre.com.au to arrange a viewing today.

The above information provided has been furnished to us by the vendor/s. We have not verified whether or not that information is accurate and do not have any belief in one way or the other in its accuracy. We do not accept any responsibility to any person for its accuracy and do no more than pass it on. All interested parties should make and rely upon their own inquiries in order to determine whether or not this information is in fact accurate.