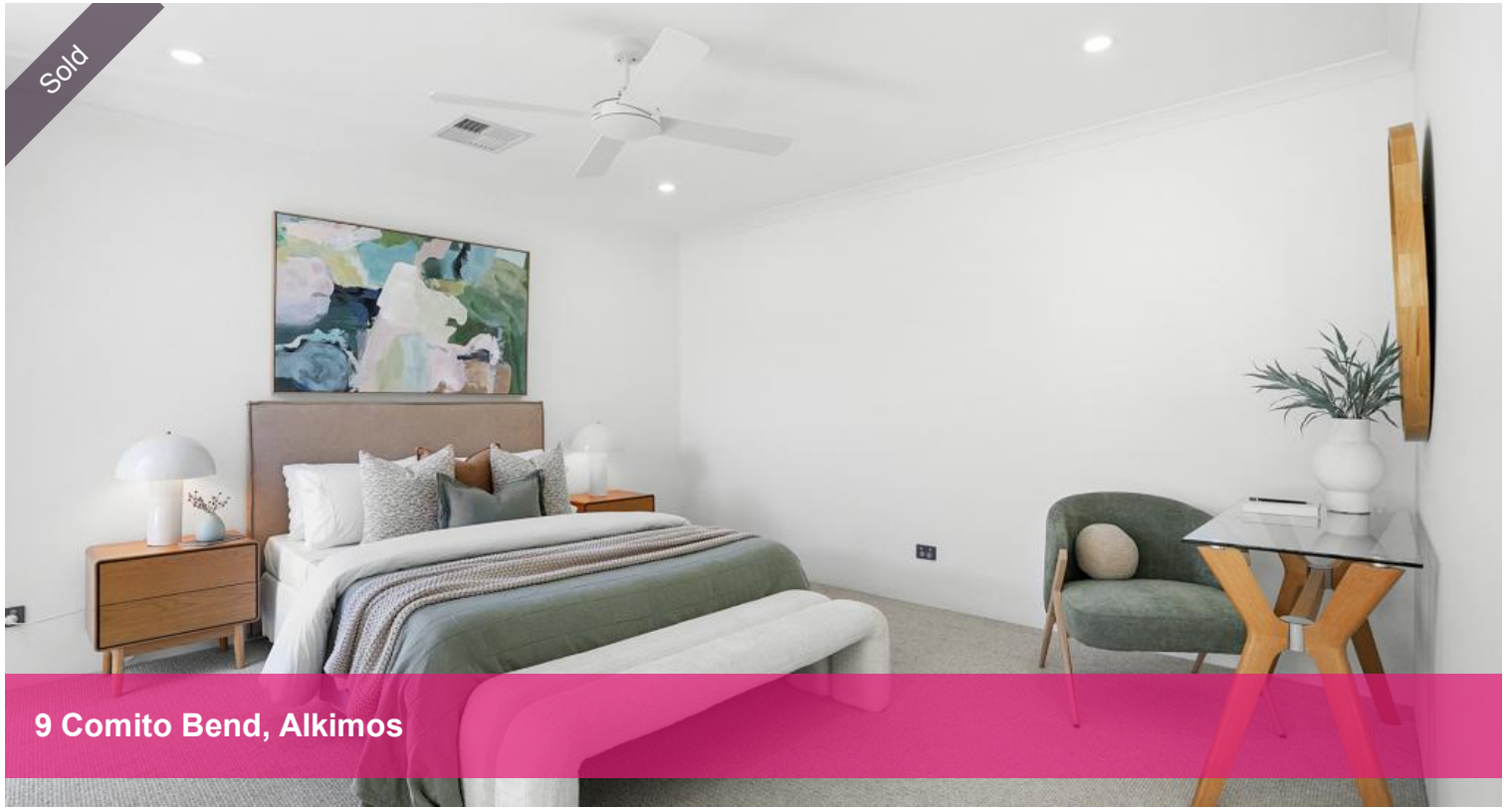


Sold



9 Comito Bend, Alkimos



UNDER OFFER with Ryan Joseph!!

INCREDIBLE HOME, EPIC LOCATION!!

Perfectly located on a whisper quiet street, across the road from a beautiful park and only 150m from Shorehaven primary school.

This fantastic 3 bedroom, 2 bathroom home combines a luxury king size master suite, high ceilings, modern finishings, and, thanks to a fresh coat of paint, brand new carpets and all new lighting throughout you can simply move in and kick up your feet!!

FEATURES YOU'LL LOVE:

- Inviting portico entrance.
- Queen size bedrooms 2 and 3 are located at the front of the home and both come with robes
- Sprawling king-size master suite comes with a walk in robe, large ensuite and direct access to the backyard
- Spacious kitchen includes 5 burner gas cooktop, large Westinghouse under bench oven, stainless steel range hood, Bosch dishwasher, double sink, fridge recess and breakfast bar
- Open plan living incorporates the kitchen, family room, dining area and thanks to triple sliding doors the backyard also becomes an extension of the main living area
- Relaxing alfresco is under the main roof of the home and includes downlights and a fan

3 bedrooms 2 bathrooms 2 car spaces 300 m²

Price SOLD for \$875,000

Property Type Residential

Property ID 32834

Land Area 300 m²

Floor Area 168 m²

Agent Details

Ryan Joseph - 0400 006 693

Office Details

Xceed Real Estate - Sales
Level 8, 3 Hasler Road Herdsman,
WA, 6017 Australia
08 9207 2088

XCEED 
REAL ESTATE

EXTRAS:

- Daiken, ducted and zoned reverse cycle air conditioning throughout
- Double car garage with 31 course ceilings for 4x4's plus space for storage or a workbench
- Rainwater tank (not currently connected)
- Built in 2014
- 300m2 block
- 168m2 Home

LOCATION:

- 20m – Mizzen Park
- 150m – Shorehaven Primary School
- 500m – Amberton Beach Flying Fox Park
- 1.6km – Shorehaven Beach
- 3km – Northshore Christian Grammar School
- 3.2km – Alkimos IGA
- 3.2km – The Landing restaurant
- 3.2km – Early Learning Centre Childcare
- 3.2km – St James Anglican School
- 4.1km – Coles
- 6.1km – Eden Beach

The above information provided has been furnished to us by the vendor/s. We have not verified whether or not that information is accurate and do not have any belief in one way or the other in its accuracy. We do not accept any responsibility to any person for its accuracy and do no more than pass it on. All interested parties should make and rely upon their own inquiries in order to determine whether or not this information is in fact accurate.