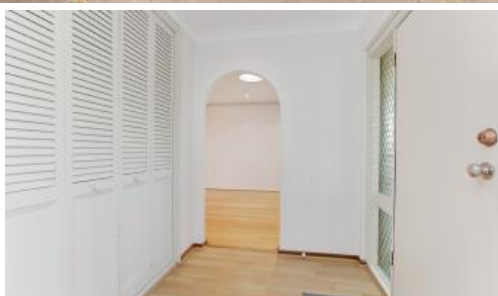


Just Listed



## Spacious Family Home in a Quiet, Convenient Hamersley Location

To enquire about inspection times for this property, please click [Contact Agent](#) to register your interest. You will then be notified when an inspection time is created - Life is better with Xceed!

PROUDLY PRESENTED BY DEON @ XCEED REAL ESTATE - YOUR LOCAL INVESTOR SPECIALIST

Welcome to 32 Eglinton Crescent, a well-presented 3-bedroom, 2-bathroom home positioned on a generous corner block in one of Hamersleys most sought-after pockets. Offering multiple living zones, a beautifully renovated kitchen, established gardens and great outdoor space, this residence delivers comfort, practicality and a relaxed family lifestyle.

With schools, parks, shops and transport all just moments away, this home is perfect for families, couples or anyone seeking a peaceful urban retreat with everyday convenience.

### Property Features

Well-presented home on a spacious corner block

Renovated kitchen with ample storage, great bench space, gas cooktop & dishwasher

Two separate living areas for flexible family living

Formal lounge with built-in bar

King-size master bedroom with built-in robes

3 2 2

**Price** \$800.00 per week

**Property Type** Rental

**Property ID** 32440

### Agent Details

Deon Nickell-Davies - 08 9207 2088

### Office Details

Xceed Real Estate - Property Management

Level 8, 3 Hasler Road Herdsman, WA, 6017 Australia

08 9207 2088

**XCEED**   
REAL ESTATE

Minor bedrooms also include built-in robes  
Awnings to front bedroom windows for added privacy & heat reduction  
Reverse-cycle air conditioning  
Bore reticulation for easy garden care  
Garden shed for additional storage  
Garage with electric roller doors  
Patio area with established gardens front and back  
Monthly lawn mowing included  
Please note: Ducted evaporative AC & alarm system are decommissioned

#### Location Highlights

Everything you need is within easy reach:  
Close to local schools  
Minutes to shopping centres and specialty stores  
Easy access to public transport  
Short distance to parks, playgrounds and walking trails  
Convenient commute to the CBD and nearby suburbs

HOW TO BOOK AN INSPECTION FOR THIS PROPERTY: To enquire about inspection times for this property, please click Contact Agent to register your interest. You will then be notified when an inspection time is created - Life is better with Xceed!

ARE YOU A PROPERTY OWNER LOOKING TO LEASE YOUR HOME? If you are looking for property management support, we would love to speak to you. Contact our Investment Consultant Deon Nickell-Davies via [deon@xceedre.com.au](mailto:deon@xceedre.com.au) to find out how we can help with your property management needs.

Disclaimer - Whilst every care has been taken in the preparation of this advertisement, all information supplied by the owners and the owners agent is provided in good faith. Prospective tenants are encouraged to make their own enquiries to satisfy themselves on all pertinent matters. Images are for illustrative purposes.

*The above information provided has been furnished to us by the vendor/s. We have not verified whether or not that information is accurate and do not have any belief in one way or the other in its accuracy. We do not accept any responsibility to any person for its accuracy and do no more than pass it on. All interested parties should make and rely upon their own inquiries in order to determine whether or not this information is in fact accurate.*