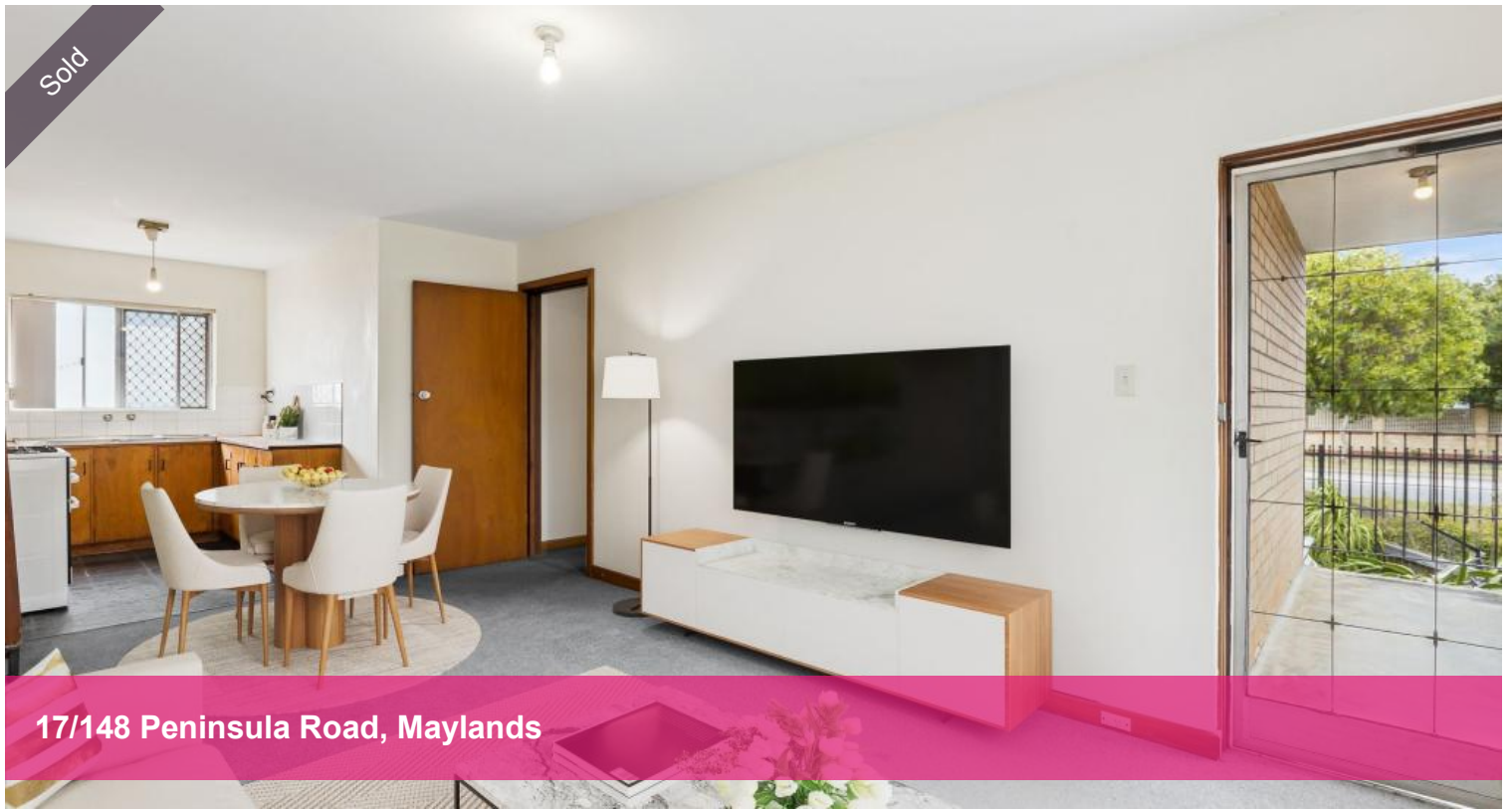


Sold



17/148 Peninsula Road, Maylands



Cosy Apartment in a Leafy Maylands Location

Discover comfort and convenience in this charming first-floor 2-bedroom, 1-bathroom unit perfectly positioned in a quiet, leafy complex. Whether you're a first-home buyer, downsizer, or savvy investor, this well-presented property offers easy living in one of Maylands' most sought-after pockets.

Features include:

Light-filled open-plan kitchen, family and meals area

Two comfortable bedrooms with ample natural light

Balcony for your morning coffee or evening unwind

Located on the first floor of a neat, well-maintained complex

Allocated car bay for secure parking

Living area of 58sqm

Strata fees: \$1,011.95 per quarter

Lifestyle & Location:

Enjoy peaceful surrounds while being just moments from everything Maylands has to offer — a vibrant café strip, boutique shops, and an array of

 2  1  1

Price SOLD for \$440,000

Property Type Residential

Property ID 32381

Agent Details

Ken Yan - 0488 886 698

Adam Whitford - 0406 616 608

Office Details

Xceed Real Estate - Sales

Level 8, 3 Hasler Road Herdsman,
WA, 6017 Australia

08 9207 2088

XCEED 
REAL ESTATE

dining options.

Families will appreciate being in the Mount Lawley Senior High School catchment, and close to Maylands Peninsula Primary School and St Columba's Primary School.

Public transport is easily accessible for a smooth commute to the Perth CBD, while nearby Bardon Park and the Maylands Peninsula Golf Course provide beautiful outdoor spaces to relax and unwind.

A delightful blend of comfort, convenience, and lifestyle – this one won't last long!

The above information provided has been furnished to us by the vendor/s. We have not verified whether or not that information is accurate and do not have any belief in one way or the other in its accuracy. We do not accept any responsibility to any person for its accuracy and do no more than pass it on. All interested parties should make and rely upon their own inquiries in order to determine whether or not this information is in fact accurate.