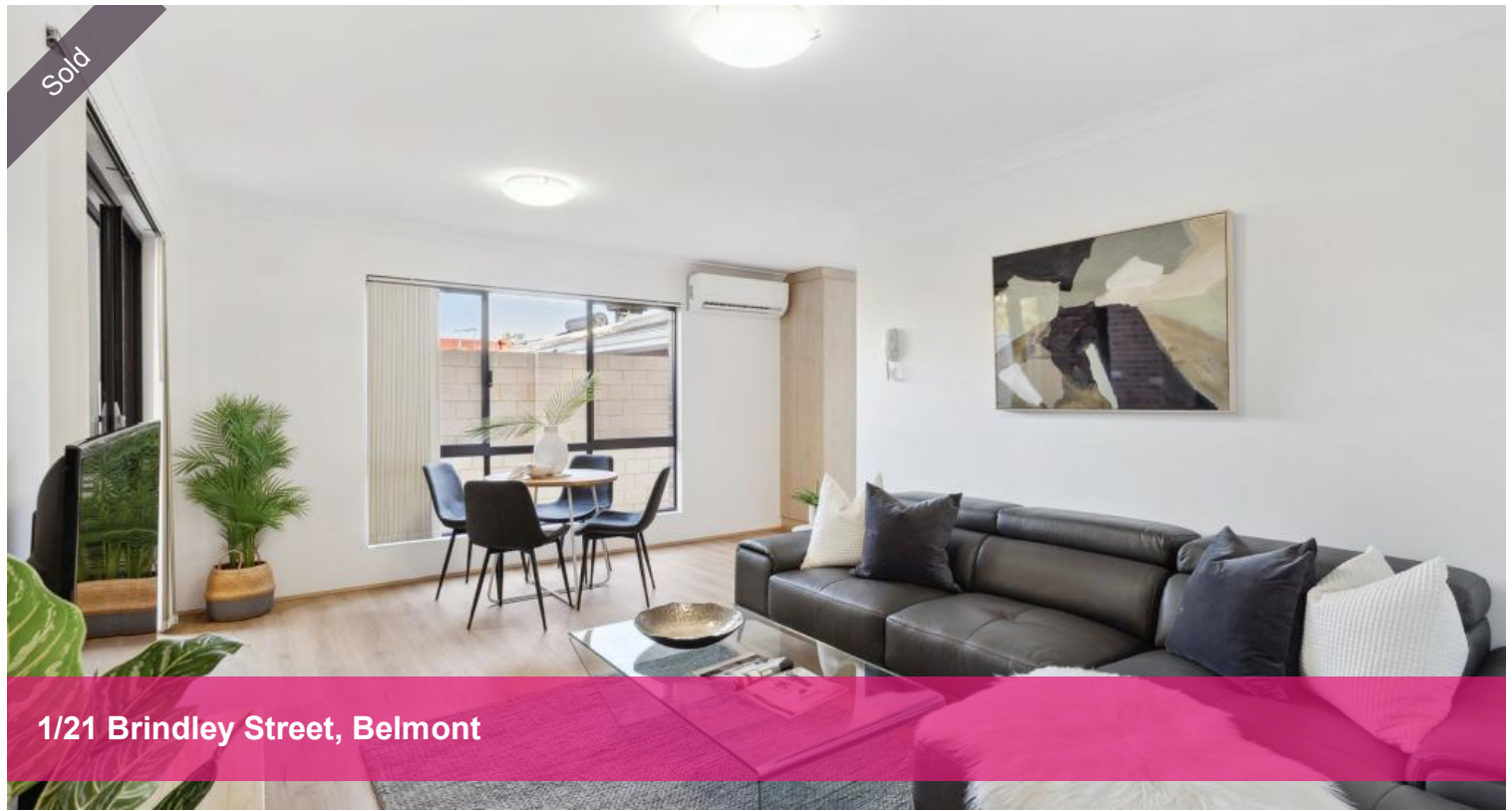


Sold



1/21 Brindley Street, Belmont



## Ground-Floor Comfort with Courtyard Charm – Perfect First Home!

If you're searching for your very first home, this is the one that will steal your heart. Welcome to 1/21 Brindley Street, Belmont – a stylish ground-floor apartment designed for effortless living and smart investing. With its private courtyard, secure entry and contemporary finishes, this is the ideal launchpad into homeownership.

Unlike upper-level units, this ground-floor gem offers you the rare luxury of your very own private courtyard – the perfect spot for morning coffees, weekend BBQs, or simply relaxing with friends. It's your own outdoor space to breathe, entertain and unwind.

Inside, you'll love the modern kitchen with elegant Essa Stone benchtops, quality appliances, and a sleek rangehood – making home cooking a joy. The open-plan layout flows seamlessly from the kitchen through the living space and out to the courtyard, blending indoor comfort with outdoor freedom.

Both bedrooms are fitted with plush carpeting and mirrored built-in robes, while the modern bathroom features a stylish shower with quality finishes. Cool, neutral tones and tiled wet areas give the apartment a fresh and timeless feel throughout.

This is a secure, low-maintenance lifestyle in a boutique complex of just 8 architecturally-designed apartments. Whether you're stepping onto the

🛏 2 🚶 1 🚗 1

<b>Price</b>	SOLD for \$480,000
<b>Property Type</b>	Residential
<b>Property ID</b>	31509
<b>Floor Area</b>	112 m2

### Agent Details

Ken Yan - 0488 886 698

Adam Whitford - 0406 616 608

### Office Details

Xceed Real Estate - Sales

Level 8, 3 Hasler Road Herdsman,  
WA, 6017 Australia

08 9207 2088

**XCEED**   
REAL ESTATE

property ladder or looking for a safe, move-in-ready investment, this home ticks all the boxes.

#### Additional Features:

Reverse cycle air-conditioning for year-round comfort

Secure gated pedestrian entry

Individual lockable storage room

Allocated under-cover car bay plus visitor parking

Intercom system

Solid concrete floors for added noise insulation

Location-wise, you're right in the heart of Belmont, with everything at your fingertips. Stroll to Belmont Forum, local schools, and Faulkner Park, or jump on nearby transport links to reach the Perth CBD, Optus Stadium, Crown Entertainment Complex, or Perth Airport in minutes.

Whether you're a first home buyer ready to make your move, or an investor seeking a low-maintenance addition to your portfolio, this one offers exceptional value and lifestyle appeal in equal measure.

Opportunities like this don't last – especially when they come with a courtyard!

Enquire today or come to our next home open – this is the ground-floor advantage you've been waiting for.

Strata Fees: \$793.85 per quarter

Council Rates: \$1,485 per year

Water Rates: \$1,116 per year

**DISCLAIMER:** The information provided is deemed to be correct but cannot be guaranteed. Prospective purchasers should make their own enquiries to satisfy themselves on all pertinent matters. Details herein do not constitute any representation by the seller or agent and are expressly excluded from any contract. Chattels depicted or described are not included in the sale unless specified in the Offer and Acceptance. The owners reserve the right to sell the property prior to the closing date.

*The above information provided has been furnished to us by the vendor/s. We have not verified whether or not that information is accurate and do not have any belief in one way or the other in its accuracy. We do not accept any responsibility to any person for its accuracy and do no more than pass it on. All interested parties should make and rely upon their own inquiries in order to determine whether or not this information is in fact accurate.*