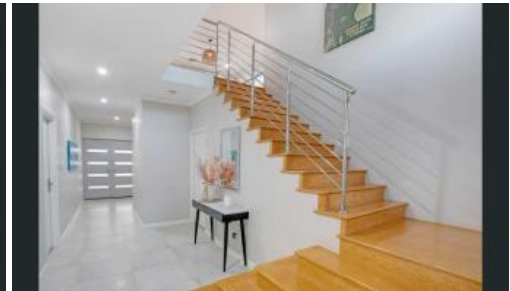


Leased



21 Eyrean Way, Gwelup



Unparalleled Elegance & Comfort

Unparalleled Elegance & Comfort

Welcome to 21 Eyrean Way Gwelup, a home that defines functionality, style, and sophisticated living. This exquisite residence offers a perfect blend of contemporary design with quality finishes, creating an ambiance of luxury and exclusivity. This four-bedroom and two-bathroom double-story home has everything a family could ever want or need. Boasting a spacious open plan main living area, leading out to a stunning low-maintenance outdoor alfresco area with resort-style below-ground swimming pool.

Features you will love:

- Spacious design with expansive living and entertaining spaces across both levels of the home
- Private sanctuary master suite with huge walk-in wardrobe, ensuite with double vanities, elegant bath tub, double rain/hose showers, heat lamps and separate toilet.
- Gourmet kitchen featuring a water-filter tap, island breakfast bar, walk-in pantry, stainless-steel six-burner Omega gas cooktop, integrated Omega microwave, separate double ovens and an integrated dishwasher
- Sparkling resort-style swimming pool with built in poolside seating and Koi fish pond (pool and pond maintenance included in the rent)
- Huge laundry boasting a stone bench top, large walk-in linen press and external/side access for drying
- Immaculate powder room on first floor
- Plenty of space in the under-stair storeroom

🛏 4 🚿 2 🚗 2

Price

LEASED BY BELLA @
XCEED REAL ESTATE

Property
Type Rental

Property
ID 31506

Agent Details

Bella Pyke - 08 9207 2088

Office Details

Xceed Real Estate - Property
Management
Level 8, 3 Hasler Road Herdsman,
WA, 6017 Australia
08 9207 2088

XCEED 
REAL ESTATE

- Breezy and covered front balcony with a pleasant park vista as its backdrop.
- Solar panels
- Walking steps over the beautiful Koi pond for side access and convenient outdoor shower
- Ducted reverse cycle air-conditioning throughout
- Well sized separate front room that is perfect for home office space
- Three spacious additional bedrooms with built-in robes
- Contemporary main family bathroom with a shower and separate bathtub.
- Double lock up garage with shoppers door entrance
- Low-maintenance artificial turf and gardens, to both the front and rear.

Premium Location:

- Situated directly opposite Lake Gwelup Primary School grounds and its lush green oval
- 9 minute drive or 4km to the popular Karrinyup Shopping centre, with heaps of cafes and restaurants
- Plenty of over the road parking - perfect for family gatherings
- Easy commute to Primewest Gwelup Shopping Centre
- 5 minute drive to Lake Karrinyup Country Club and golf course
- 10 minutes from Trigg beach

This home is not to be missed!

Available: 11/04/2025

Lease term: 12 months

Please include a cover letter in your application.

HOW TO BOOK AN INSPECTION FOR THIS PROPERTY:

If you would like to book an inspection for this property, then simply scroll down past the description and click the 'Book an Inspection Time' button and select from one of the available times. 2 apply applications will be accepted once the property has been viewed.

Home open dates and times are subject to change so it is essential you register so that we can keep you informed.

If no time is currently available, register your interest and you will be alerted when the next inspection time is scheduled.

Life is better with Xceed®!

The above information provided has been furnished to us by the vendor/s. We have not verified whether or not that information is accurate and do not have any belief in one way or the other in its accuracy. We do not accept any responsibility to any person for its accuracy and do no more than pass it on. All interested parties should make and rely upon their own inquiries in order to determine whether or not this information is in fact accurate.