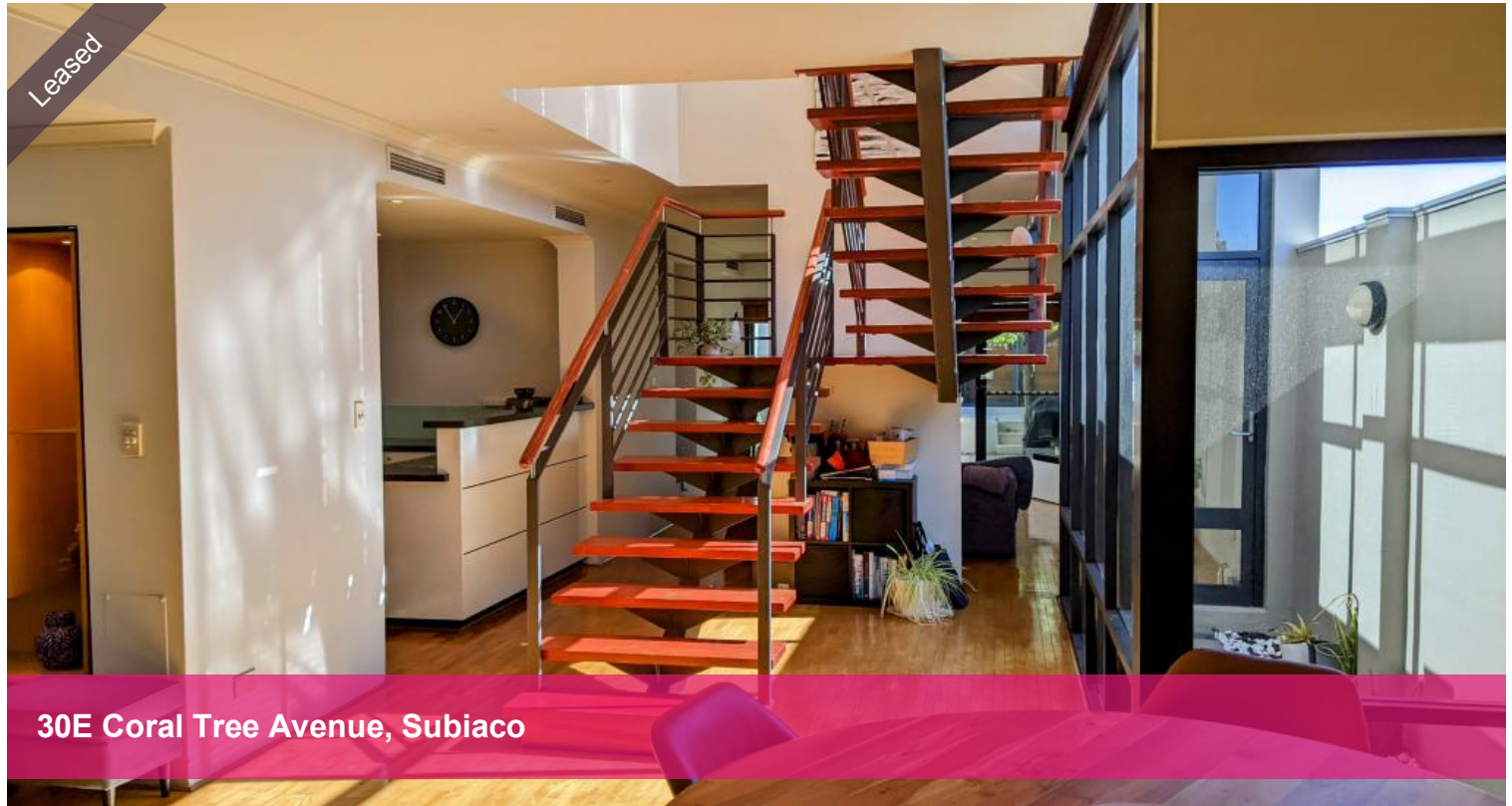


Leased



30E Coral Tree Avenue, Subiaco



## Low-maintenance, comfort & convenience

Nestled away is this charming and stylish double storey home.

Soaked in natural light, this lovely family home is perfectly located on a quiet tree lined street in sought after Subiaco. Two levels to enjoy - living and dining areas downstairs and bedrooms upstairs.

### Features include:

- Unfurnished
- Bright and cheerful separate living area with polished timber floor boards
- Separate dining area with polished timber floor boards
- Reverse cycle heating and cooling for all weather conditions
- Good size kitchen with granite bench tops, gas cooking and dishwasher
- Main bedroom with large ensuite including a corner spa bath and own balcony
- Main bathroom with separate shower and gorgeous bath
- 2nd and 3rd bedroom with built in robes
- Small study nook
- Internal laundry with storage
- Powder room at ground level
- Separate internal store room near entry
- Low maintenance courtyard off of the dining room - perfect for Summer BBQ's
- Spacious double lock up remote access garage from rear of property

🛏 3 🚿 2 🚗 2

<b>Price</b>	\$950 per week
<b>Property Type</b>	Rental
<b>Property ID</b>	30315

### Agent Details

Courtenay Barry - 08 9207 2088

### Office Details

Xceed Real Estate - Property Management  
Level 8, 3 Hasler Road Herdsman, WA, 6017 Australia  
08 9207 2088

**XCEED**   
REAL ESTATE

*Please include a cover letter in your application.*

*Lease Terms:*

**Pets:** Sorry, no pets

**Lease:** The minimum lease term is 12 months +

#### **HOW TO BOOK AN INSPECTION FOR THIS PROPERTY:**

If you would like to book an inspection for this property, then simply scroll down past the description and click the 'Book an Inspection Time' button and select from one of the available times.

Home open dates and times are subject to change so it is essential you register so that we can keep you informed.

If no time is currently available, register your interest and you will be alerted when the next inspection time is scheduled.

*The above information provided has been furnished to us by the vendor/s. We have not verified whether or not that information is accurate and do not have any belief in one way or the other in its accuracy. We do not accept any responsibility to any person for its accuracy and do no more than pass it on. All interested parties should make and rely upon their own inquiries in order to determine whether or not this information is in fact accurate.*