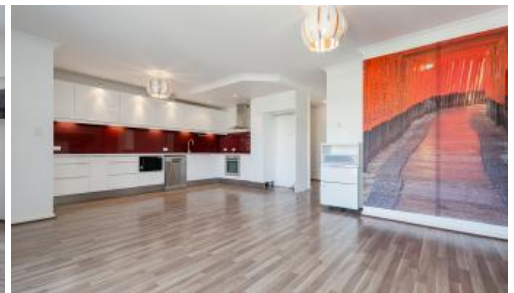


Leased



139/250 Beaufort Street, Perth



## RESORT STYLE LIVING!

Indulge in urban living combined with a tranquil retreat in this contemporary two-story apartment. Enjoy breathtaking views of a resort-style pool and tropical gardens below, complemented by glimpses of towering skyscrapers in the distance. Situated within the renowned Beaufort Central apartment development, this secure residence offers exclusive access to a host of onsite amenities, including lap pools, spas, a gymnasium, recreational room, and communal barbecue areas.

Inside, the sunlit open-plan interior provides an inviting escape from city life. This striking apartment features 2 bedrooms, 2 bathrooms, and 2 car bays with an additional storage room. The living and dining areas are thoughtfully designed for both functionality and style, while the fantastic terrace overlooks the inviting pool area. Secure parking and storage add convenience to the overall appeal.

The well-appointed kitchen boasts modern amenities such as an electric oven, gas hobs, dishwasher, and ample overhead storage. The wooden look flooring adds warmth to the space, complemented by the comfort of a reverse cycle split system air conditioning. Both bedrooms come with built-in robes, ensuring ample storage for your convenience.

As for the location, revel in the proximity to vibrant Asian grocers, dining options, and Perth's iconic bars and restaurants in the CBD, Northbridge, Highgate, and Mount Lawley. The surrounding area also offers quality stadiums, entertainment venues, community parkland, and the scenic Swan River foreshore, just a 5-minute drive away.

🛏 2 🚗 2 🚗 2

<b>Price</b>	\$700 Per Week
<b>Property Type</b>	Rental
<b>Property ID</b>	29989

### Agent Details

Kristie-Lee Newnham - 08 9207 2088

### Office Details

Xceed Real Estate - Property Management  
Level 8, 3 Hasler Road Herdsman, WA, 6017 Australia  
08 9207 2088

**XCEED**   
REAL ESTATE

Within a 5-10 minute walk, discover Weld Square, Super IGA, North Metropolitan TAFE, Banks Reserve (Swan River foreshore), Woolworths Highgate, HBF Park, and Highgate Primary School. Extend your stroll to 10-20 minutes, and you'll find yourself near Hyde Park, Chu Bakery, Perth CBD, Perth City Farm, Northbridge, East Perth Train Station, Perth Underground Train Station, and a regular bus service via Beaufort Street. Immerse yourself in the vibrant surroundings and make this well-appointed apartment your urban oasis.

**Pets:** Pets considered

**Available:** Now

**Lease term:** 12 months minimum

*Please include a cover letter in your application.*

#### **HOW TO BOOK AN INSPECTION FOR THIS PROPERTY:**

If you would like to book an inspection for this property, then simply scroll down past the description and click the 'Book an Inspection Time' button and select from one of the available times. 2apply applications will be accepted once the property has been viewed.

Home open dates and times are subject to change so it is essential you register so that we can keep you informed.

If no time is currently available, register your interest and you will be alerted when the next inspection time is scheduled.

**Life is better with Xceed®!**

The above information provided has been furnished to us by the vendor/s. We have not verified whether or not that information is accurate and do not have any belief in one way or the other in its accuracy. We do not accept any responsibility to any person for its accuracy and do no more than pass it on. All interested parties should make and rely upon their own inquiries in order to determine whether or not this information is in fact accurate.