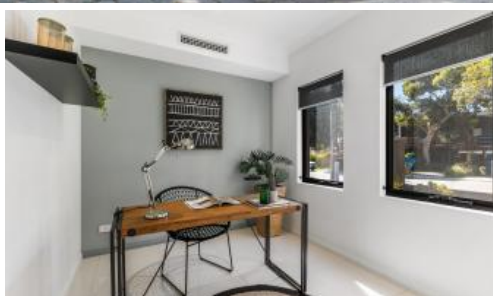


Sold



53 Milton Street, Mount Hawthorn



## Executive Family Home

Nestled in sought-after Mount Hawthorn, this pristine residence is the epitome of tranquil living with easy access to local amenities, Mount Hawthorn Primary School, The Mezz, Menzies Park, & Perth CBD.

Step inside and be captivated by the elegance, functionality and space this property offers. Boasting 3 bedrooms, 2 bathrooms, a study/4th bedroom, 2 living areas and courtyard this quality home is perfect for those looking for a low maintenance lifestyle with ample space.

The open-plan living and dining area, adorned with stylish tiles, leads you to a charming courtyard, perfect for relaxation and entertaining. The gourmet master chef kitchen is fitted with quality appliances and feature lighting complete with a welcoming island bench, which will inspire your culinary creativity.

Upstairs you will find a spacious second living area featuring a convenient kitchenette and stunning timber flooring. Two additional double bedrooms and well appointment bathroom is also situated upstairs. The master bedroom boasts a generously sized walk-in robe, ensuite, beautiful timber floors, and your very own private balcony with feature cedar ceiling and quality light fixtures – a personal sanctuary for those quiet moments.

Additional features include a separate powder room downstairs, versatile study that can easily become a fourth bedroom, spacious laundry with its

3 2 2 311 m2

**Price** SOLD for \$1,020,000

**Property Type** Residential

**Property ID** 29483

**Land Area** 311 m2

### Agent Details

Hamish Laidlaw - 0417 971 528

### Office Details

Xceed Real Estate - Sales  
Level 8, 3 Hasler Road Herdsman,  
WA, 6017 Australia  
08 9207 2088

**XCEED**   
REAL ESTATE

own drying courtyard, easy care gardens and split system reverse cycle air-conditioning.

Ideally located close to public transport, shopping centres, school, parks, restaurants and more this pristine residence is perfect for families, downsizers and investors. Also, within the catchment zone for Mount Hawthorn Primary School and Bob Hawke College.

Contact Hamish Laidlaw today on 0417 971 528 to arrange a private viewing today!

Features;

- 3 spacious bedrooms
- 2 modern bathrooms
- Powder room downstairs
- Open plan kitchen/living/dining
- Study/4th bedroom
- Upstairs second living area with kitchenette
- Feature staircase
- Master bedroom with ensuite, walk-in-robe and balcony
- Stunning timber flooring
- Quality fixtures and fittings throughout
- Stylish tiles
- Quality LED lights
- Feature ceilings
- Private courtyard
- Low maintenance required
- Quiet street
- No strata fees

Approximate distance to;

- 800m- Menzies Park
- 1.0km- Mount Hawthorn Primary School
- 1.7km- The Mezz Shopping Centre
- 1.8KM- Lake Monger
- 4.2km- Bob Hawke College
- 5.5km- Perth CBD

Water Rates- \$1,666.84

Council Rates- \$2,762.72

*The above information provided has been furnished to us by the vendor/s. We have not verified whether or not that information is accurate and do not have any belief in one way or the other in its accuracy. We do not accept any responsibility to any person for its accuracy and do no more than pass it on. All interested parties should make and rely upon their own inquiries in order to determine whether or not this information is in fact accurate.*