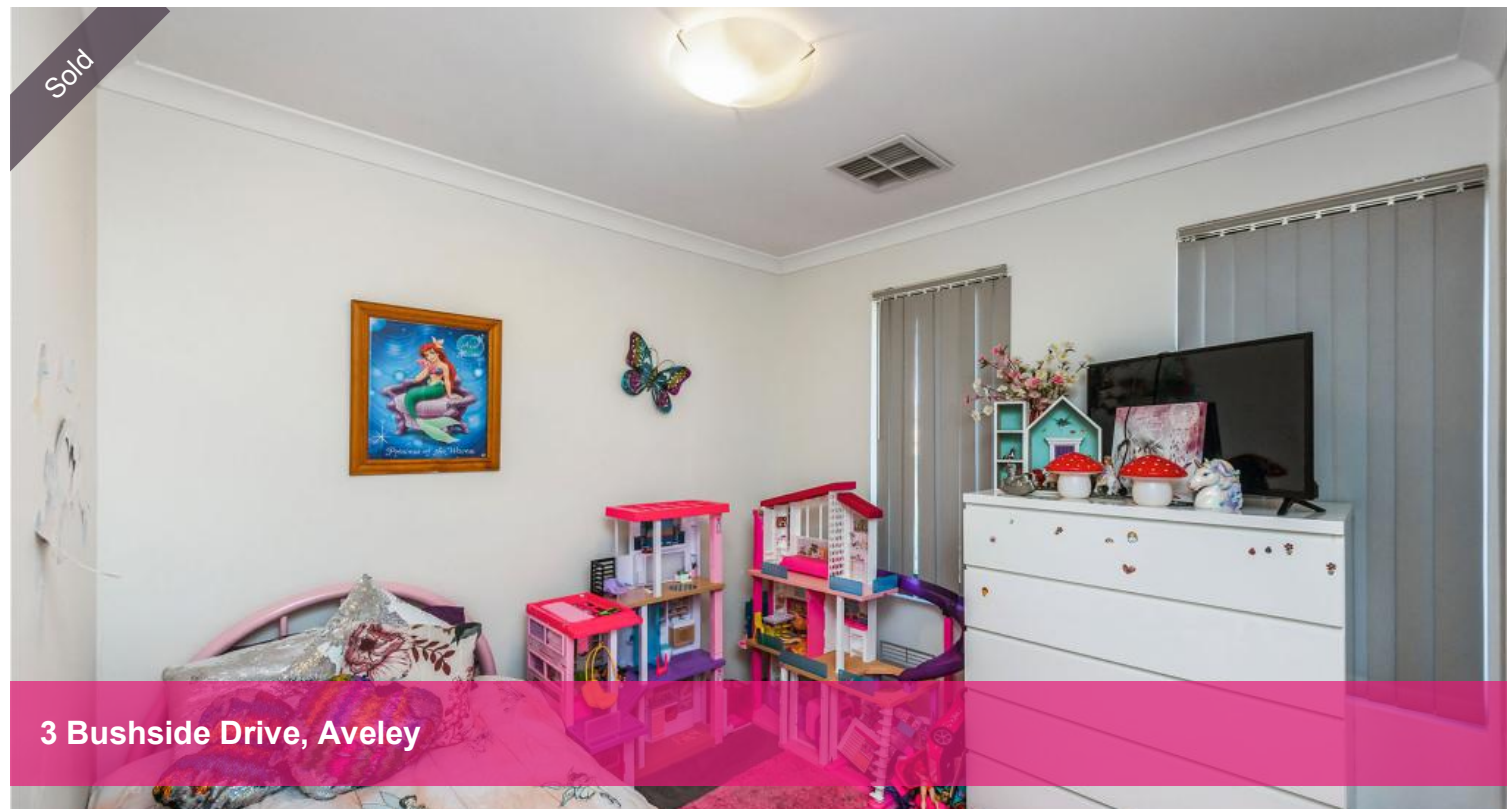


Sold



## Space for the Whole Family in Prime Position

This property is for sale by Openn Negotiation (online auction with flexible terms for qualified buyers). Contact Liz Stewart on 0422 247 321 immediately to become qualified and avoid disappointment. Masks are required inside.

Set close to exceptional education and native bushland, you could breathe a little easier knowing that this home is yours.

Perfect for a family that needs their space, this elevated 4x2 in a suburban corner of Aveley has plenty of room for all, welcoming you with wide double entry doors. The master bedroom boasts a semi-ensuite with a shower, twin basins and a pair of matching mirrors, so that everyone has their own space in the morning. There's also a second shower in the main bathroom, along with a bath.

Communal areas make living a breeze, with tiled flooring and reverse cycle ducted air-conditioning. The kitchen comes ready for weekly meal prep with plenty of bench space and a kitchen island featuring double sink. There's also a 5-burner gas cooktop and feature wall recess so it's easy to call into the next room while the food is still hot. This residence includes a separate lounge and theatre room to allow individuals in the home to enjoy their favourite shows without disturbing others.

🛏 4 🚿 2 🚗 2

**Price**

**SOLD**

**Property Type**

**Residential**

**Property ID**

**27775**

### Agent Details

Taneale Di Costa - 0450 283 070

### Office Details

Xceed Real Estate - Sales  
Level 8, 3 Hasler Road Herdsman,  
WA, 6017 Australia  
08 9207 2088

**XCEED**   
**REAL ESTATE**

Warm evenings could be spent on the front lawn of this fully-enclosed property, watching the sky change colour as the sun sets over views of undeveloped native bushland. If there are kids getting bored, they can head to the back of house, where the paved alfresco is sheltered under the main roof and there is enough lawn for a game of kanga cricket or totem tennis.

Excellent schools such as Holy Cross College and Aveley Secondary College are within easy cycling distance, and there's early childhood education and primary schools nearby. There's also no shortage of parks to explore and other activities in Ellenbrook, The Vines, and the picturesque Swan Valley beyond.

Please note that this home is currently tenanted at \$390pw until 14 July 2022.

Homes in Aveley are in demand – call Liz Stewart today on 0422 247 321.

#### Property Features:

- Large 4-bedroom home
- Semi-ensuite bathroom plus main bathroom
- Double-door entrance with security screens
- Tiles throughout communal areas
- Separate lounge
- Theatre room
- Alarm

*The above information provided has been furnished to us by the vendor/s. We have not verified whether or not that information is accurate and do not have any belief in one way or the other in its accuracy. We do not accept any responsibility to any person for its accuracy and do no more than pass it on. All interested parties should make and rely upon their own inquiries in order to determine whether or not this information is in fact accurate.*