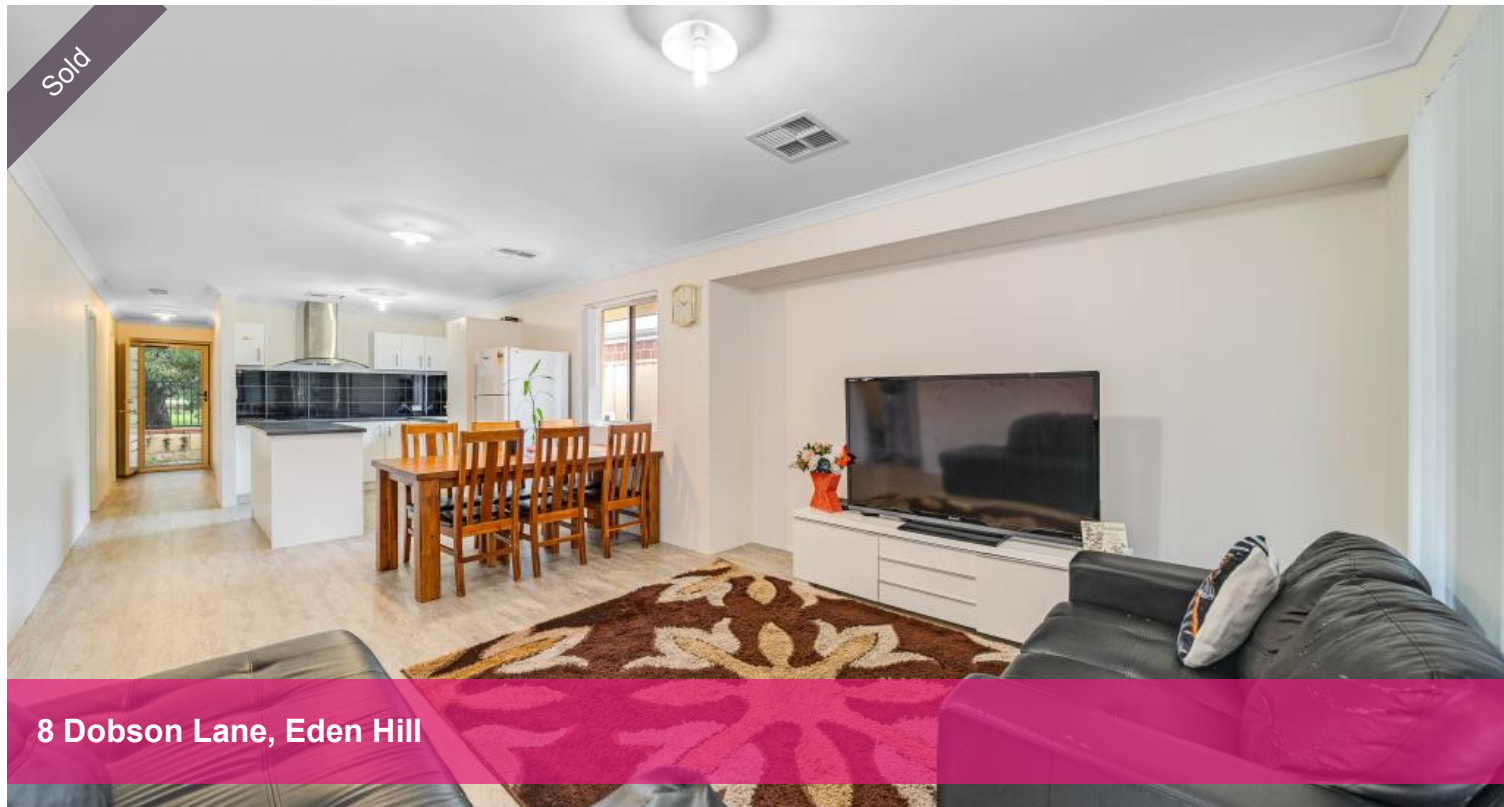


Sold



8 Dobson Lane, Eden Hill



## PARKSIDE LOCATION

Open by private inspections only. Call Simar Singh on 0433 767 296

Simple Low Maintenance Home for you to enjoy now.

Enjoy entertaining friends & family in the front, rear, or inside! With its central kitchen and open floor plan, this house is perfect for busy or simple living.

Enjoy local parklands right outside your doorstep, and the convenience of being only 2.5kms from Altone Community Centre and 3km to Bassendean Village & Train station.

This easy-care, quality constructed home has a private & secure laneway entry with space for two vehicles and has room for pets!

This family sized home features four generous sized bedrooms, along with separate lounge that could double as an extra bedroom! With easy-care vinyl flooring in main living areas, carpeted bedrooms, Security screen windows/doors, ducted reverse cycle air conditioning throughout, this house has an inviting feel to it.

This is an incredible investment opportunity or perfect for someone with a busy lifestyle looking for a low-maintenance property.

- 14km to Perth CBD & Perth Airport

- 10 km from Swan Valley.

4 2 2

**Price**

**SOLD**

**Property Type**

**Residential**

**Property ID**

**27692**

### Agent Details

Taneale Field - 08 9207 2088

### Office Details

Xceed Real Estate - Sales  
Level 8, 3 Hasler Road Herdsman,  
WA, 6017 Australia  
08 9207 2088

**XCEED**   
**REAL ESTATE**

- 8 km to Midland Junctions.
- 6km to Morley Galleria
- 2.4km to the Altone Park Golf Course
- 0.5km to multiple bus stops

Contact Simar Singh from Xceed Real Estate on 0433 767 296 to register your interest TODAY - your family & friends will thank you!

Disclaimer: The information provided herein has been prepared with care; however, it is subject to change and cannot form part of any offer or contract. Whilst all reasonable care has been taken in preparing this information, the seller or their representative or agent cannot be held responsible for any inaccuracies.

\* Interested parties must be sure to undertake their independent enquiries.

*The above information provided has been furnished to us by the vendor/s. We have not verified whether or not that information is accurate and do not have any belief in one way or the other in its accuracy. We do not accept any responsibility to any person for its accuracy and do no more than pass it on. All interested parties should make and rely upon their own inquiries in order to determine whether or not this information is in fact accurate.*