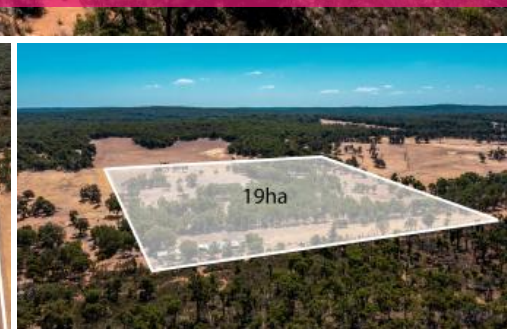
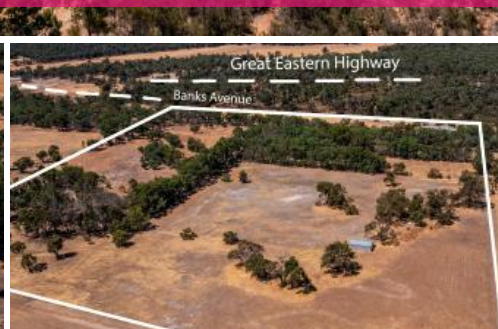


Sold



450 Banks, Beechina



## Large Country Home & Acreage!

This property is for sale by Openn Negotiation (online auction with flexible terms for qualified buyers). Contact Liz Stewart on 0422 247 321 immediately to become qualified and avoid disappointment.

Open by appointment only. Masks are required inside.

Let your imagination run wild with the incredible things you could do with 18.98 hectares of fertile land tucked away in the idyllic countryside. The homestead-style dwelling consists of two self-contained sections under the same roof, with a total of six-bedrooms, three-bathrooms, two kitchens, multiple living spaces and alfresco dining.

The main part of the house offers four bedrooms, a family room, formal lounge/dining and two bathrooms, while the second section has two bedrooms, one bathroom, kitchen/dining and a lounge. With the wrap-around veranda, high ceilings and a flexible floorplan, you could easily create your dream homestead.

The block consists of a winter creek, cleared parkland, four rain tanks, fertile soil for crops and two powered sheds. There are loads of opportunities to cultivate the land, rear livestock, create a hobby farm or a new business.

6 3

**Price**  
**Property Type**  
**Property ID**

**SOLD**  
**Residential**  
**27074**

### Agent Details

Jonathan Marlow - 08 9402 2299

### Office Details

Xceed Real Estate - Sales  
Level 8, 3 Hasler Road Herdsman,  
WA, 6017 Australia  
08 9207 2088

**XCEED**   
**REAL ESTATE**

Situated in the Shire of Mundaring and approximately 44 kilometres east of Perth, you have an abundance of natural attractions to explore, including Beechina Nature Reserve, Lake Leschenaultia, the surrounding Darling Ranges, hiking, cycling and horse-riding trails, including the Golden Pipeline Heritage Trail. You have easy access to Great Eastern Highway, which will take you to the Chidlow or Mundaring townships where you'll find schools, shops, cafes and many amenities.

This brick and iron property offers a rare opportunity for an incredible lifestyle in the country. Please contact Liz Stewart on 0422 247 321 or [liz@xceedre.com.au](mailto:liz@xceedre.com.au) today.

#### Property features:

- Six bedrooms, three bathrooms
- 18.98 hectares
- Potential for two houses under the one roof
- 2 x formal lounges & 2 x dining/family rooms
- 2 x well-equipped kitchens
- 2 x laundries
- Master bedroom includes an en-suite
- Slate flooring
- High ceilings
- Exposed brick
- Split system air-conditioning and ceiling fans
- Combustion stove
- Security screens
- Solar hot water
- Gas bottles
- Satellite internet
- Bore water
- Four rain tanks (1x20k, 1x12k, 2x3k)
- Two sheds with single-phase power
- Fertile soil for crops
- Wrap-around veranda
- Paved patio with a fire-pit

Location highlights:

- 4.1km to Beechina Nature Reserve
- 4.6km to Lake Manaring
- 5.6km to Wooroloo Primary School
- 9km to Chidlow township
- 9.1km to Chidlow Primary School
- 11.5km to Lake Leschenaultia
- 13.1km to Eastern Hills Senior High School
- 20km to Mundaring

*The above information provided has been furnished to us by the vendor/s. We have not verified whether or not that information is accurate and do not have any belief in one way or the other in its accuracy. We do not accept any responsibility to any person for its accuracy and do no more than pass it on. All interested parties should make and rely upon their own inquiries in order to determine whether or not this information is in fact accurate.*