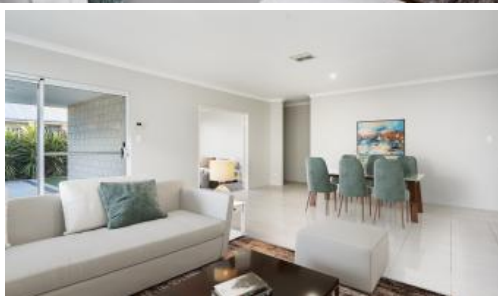


Sold



37 Impressions Dr, Eglinton



COASTAL LIVING FOR THE WHOLE FAMILY!

The Obvious

4 bedrooms, 2 bathrooms, perfectly sized 419sqm block less than 10 minutes from the coast!

The Opportunity

To secure a fantastic, modern and stylish beachside home, built in 2017 and looking as good today as the day it was completed. Sitting in a quiet estate in the beautiful suburb of Eglinton, nestled between Alkimos and the beauty of Yanchep surrounded by quality homes, and sitting just 5.1km to the stunning Western Australian Coast, lifestyle living doesn't get much better than this.

What we love

Featuring 4 great sized bedrooms, open plan kitchen family meals, separate theatre, ducted air-conditioning, and a modern chefs kitchen. This cleverly designed floorplan fully utilises its generous size to give te modern family the space and versatility we need. However, it's not only the floorplan that sets this home apart, it is the wonderful finishes that adorn the space which truly makes it great. Complete with beautiful gloss, wood look cupboards to the kitchen and bathrooms, stunning freestanding bath, feature lighting, stone benchtops, stainless steel appliances and an abundance of natural light, just to name a few of the reasons you'll be excited to show it off to your family

🛏 4 🚿 2 🚗 2

Price

SOLD

Property Type

Residential

Property ID

26856

Agent Details

Adam Whitford - 0406 616 608

Office Details

Xceed Real Estate - Central
3 Hasler Rd Herdsman, WA, 6017
Australia
08 9207 2088

XCEED 
REAL ESTATE

and friends.

Not only is this home light, bright, modern and spectacular in its finish and location but the low maintenance and easy care outdoor entertaining area is a feature all on its own. Sitting on a perfectly sized 419sqm block this home has just the right amount of space inside and out and with the outdoor area opening out from the living, it's like being gifted an extra living space allowing you to bring the outdoors in! Complete with undercover entertaining, easy care paving and beautiful forever green Astro turf lawns, they really have thought of everything in the utilization of this space.

So don't miss out and don't delay make sure you call Caroline Turner on 0404 332 689 to book in your very own private inspection today!

What will secure the opportunity

Offers

Some fantastic extras

- Stone benchtops to the kitchen
- Feature light fittings over the island bench
- Open plan kitchen family meals flows out to the outdoor entertaining
- Ducted air-conditioning throughout
- 1.6kw solar system
- 5500L below ground rainwater tank
- Separate living/theatre room with beautiful double doors
- Cleverly designed floorplan flows seamlessly from room to room
- Modern bathrooms complete with stylish wood look cupboards
- Great sized minor bedrooms with built in robes
- Spacious master complete with, his and her mirrored robes and its very own ensuite
- Less than 10 minutes to the stunning W.A coast
- 700m from the popular Kinkuna splash park
- 1km from the Eglinton train station due to open in 2022
- Close to parks and schools
- Low maintenance and easy care lifestyle living!
- And much much more....

DON'T MISS OUT CALL TEAM TURNER ON 0404 332 689

THINK REAL ESTATE | THINK TURNER

The above information provided has been furnished to us by the vendor/s. We have not verified whether or not that information is accurate and do not have any belief in one way or the other in its accuracy. We do not accept any responsibility to any person for its accuracy and do no more than pass it on. All interested parties should make and rely upon their own inquiries in order to determine whether or not this information is in fact accurate.