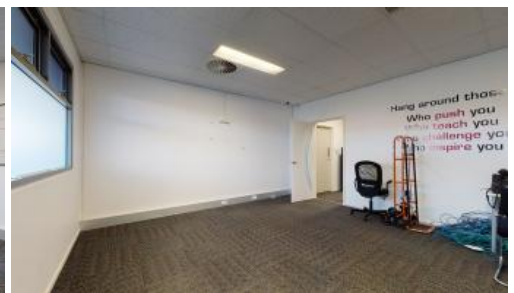
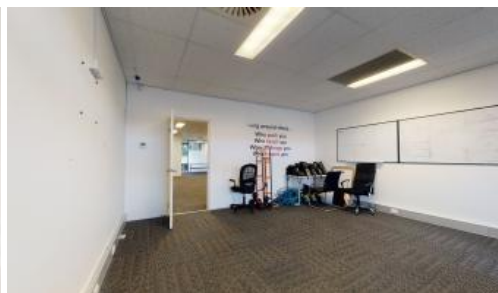




**6,7 & 8A, 29 Collier Road, Morley**



## AREA RANGING 332M2 DOWN TO 87M2

- PREMIUM OFFICES AVAILABLE
- AREAS AVAILABLE ARE FROM 87M2 - 332M2
- DUCTED AIRCONDITONING
- ALARMED
- FIXED FLOOR COVERINGS
- ALLOCATED CARBAYS
- OPPOSITE MAJOR SHOPPING CENTRE
- LOADS OF PASSING TRAFFIC
- AMENIDITIES

*The above information provided has been furnished to us by the vendor/s. We have not verified whether or not that information is accurate and do not have any belief in one way or the other in its accuracy. We do not accept any responsibility to any person for its accuracy and do no more than pass it on. All interested parties should make and rely upon their own inquiries in order to determine whether or not this information is in fact accurate.*

332 m2

**Price** PREMIUM OFFICES FOR THE PROFESSIONALS!

**Property Type** Commercial

**Property ID** 17077

**Land Area** 332 m2

**Office Area** 332 m2

### Agent Details

Jackie Skubevski - 0428 820 052

### Office Details

Xceed Real Estate - Commercial  
Leasing & Sales  
Level 8, 3 Hasler Road Herdsman,  
WA, 6017 Australia  
08 9207 2088

**XCEED**   
REAL ESTATE