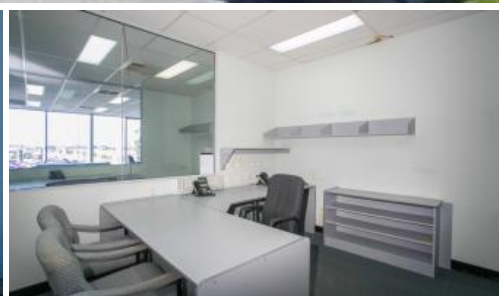


Sold



## NEW ASKING PRICE!!!!

- Double story building totalling 413m2
- Offices/showroom/boardroom
- Ground & first floor amenities
- Kitchen on ground floor
- Fully air-conditioned, furnished with floor coverings and window treatments
- Prominently located on busy Prindiville Drive!
- Both staff & clients can take advantage of the location with easy access to the Mitchell Freeway!
- This property is also available for lease

*The above information provided has been furnished to us by the vendor/s. We have not verified whether or not that information is accurate and do not have any belief in one way or the other in its accuracy. We do not accept any responsibility to any person for its accuracy and do no more than pass it on. All interested parties should make and rely upon their own inquiries in order to determine whether or not this information is in fact accurate.*

413 m2

Price	SOLD
Property Type	Commercial
Property ID	16634
Land Area	413 m2
Office Area	413 m2

### Agent Details

Jackie Skubevski - 0428 820 052

### Office Details

Xceed Real Estate - Commercial  
Leasing & Sales  
Level 8, 3 Hasler Road Herdsman,  
WA, 6017 Australia  
08 9207 2088

**XCEED**   
REAL ESTATE