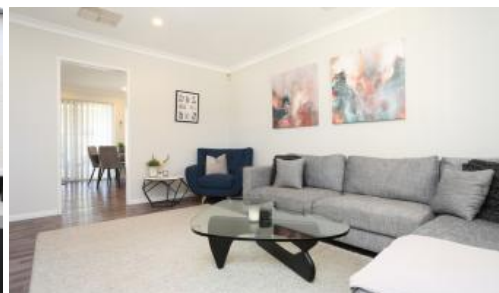


Sold

38A Ipswich Crescent, Girrawheen



## FULLY RENOVATED GEM ON POTENTIAL DUPLEX SITE!

Tom Vlahos presents this well located, high quality fully renovated, as new street front family home close to all amenities, parks, schools, shopping centres and features galore...

- 3 Good size bedrooms all with mirrored built in robes
- Deluxe, light and bright bathroom with shower and vanity
- Good size lounge room off the entry
- Ultra modern kitchen with Westinghouse stainless steel appliances and plenty of bench and cupboard space
- Spacious dining area opens through glass sliders to the great outdoor entertaining area
- Reverse cycle split system airconditioning to living area
- Quality new flooring, carpets and downlights throughout
- Separate laundry with direct access to the back yard
- Private outdoor entertaining area with all weather patio overlooking low maintenance astro turf and easy care manicured gardens all automatically reticulated
- Very Safe and secure with alarm system, security doors to front and back entrances and security lighting

3 1 3 382 m2

<b>Price</b>	SOLD
<b>Property Type</b>	Residential
<b>Property ID</b>	16021
<b>Land Area</b>	382 m2

### Agent Details

Tom Vlahos - 0408 427 514

### Office Details

Xceed Real Estate - Central  
3 Hasler Rd Herdsman, WA, 6017  
Australia  
08 9207 2088

**XCEED**   
REAL ESTATE

- Under cover car bay plus plenty of room for extra parking
- Handy separate storage / shed area

Nothing to do but simply move in, bring your suitcases, relax and enjoy this immaculate home! Situated on a 382sqm potential duplex site this home is well priced to sell today! Book your look with Tom Vlahos 0408 427 514

*The above information provided has been furnished to us by the vendor/s. We have not verified whether or not that information is accurate and do not have any belief in one way or the other in its accuracy. We do not accept any responsibility to any person for its accuracy and do no more than pass it on. All interested parties should make and rely upon their own inquiries in order to determine whether or not this information is in fact accurate.*