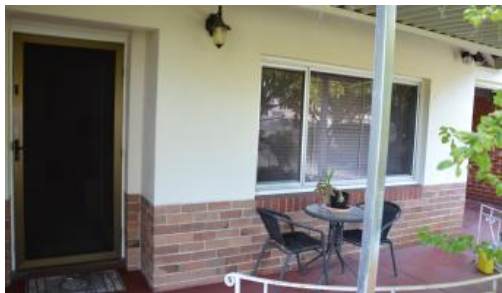


Sold



128 Shaftesbury Ave, Bedford



A Rare find indeed!!

This original Character home with high ceilings and Jarrah floors has been built well forward and to one side of this 984 square metre block.

There is ample room to extend and retain with room for a second home to the rear. An easy stroll to Chisolm college, parkland and transport.

The above information provided has been furnished to us by the vendor/s. We have not verified whether or not that information is accurate and do not have any belief in one way or the other in its accuracy. We do not accept any responsibility to any person for its accuracy and do no more than pass it on. All interested parties should make and rely upon their own inquiries in order to determine whether or not this information is in fact accurate.

2 1 984 m2

Price	SOLD
Property Type	Residential
Property ID	15675
Land Area	984 m2

Agent Details

Larry Gallagher - 0418 946 357

Office Details

Xceed Real Estate - Commercial
Leasing & Sales
Level 8, 3 Hasler Road Herdsman,
WA, 6017 Australia
08 9207 2088

XCEED 
REAL ESTATE