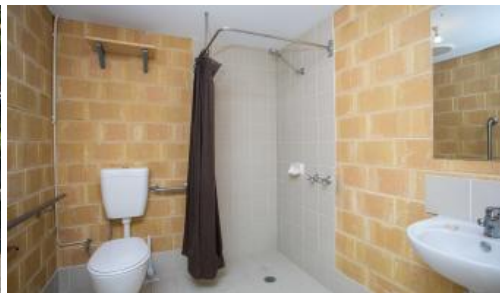




Unit 6, 10 Dillington Pass, Landsdale



## 2 MONTHS FREE RENT & NEW ASKING PRICE!!!!

This 207m2 unit is ready to be leased, comprising of high truss and roller door with separate entrance, wc and shower. Exclusive use of 4 carbays. Call now to view this property

*The above information provided has been furnished to us by the vendor/s. We have not verified whether or not that information is accurate and do not have any belief in one way or the other in its accuracy. We do not accept any responsibility to any person for its accuracy and do no more than pass it on. All interested parties should make and rely upon their own inquiries in order to determine whether or not this information is in fact accurate.*

📏 207 m2

**Price** \$14490 p.a plus outgoings of \$6655.42 p.a. + GST

**Property Type** Commercial

**Property ID** 15594

**Land Area** 207 m2

**Warehouse Area** 207 m2

### Agent Details

Jackie Skubevski - 0428 820 052

### Office Details

Xceed Real Estate - Commercial  
Leasing & Sales  
Level 8, 3 Hasler Road Herdsman,  
WA, 6017 Australia  
08 9207 2088

