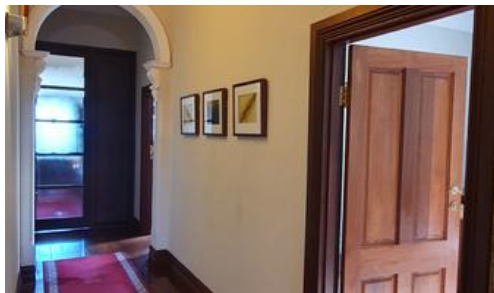




696 Beaufort St, Mount Lawley



Premium Co-share Opportunity

In renovated character building with generous parking and strong street presence.

Choice of three separate offices furnished or unfurnished starting at \$685pcm for 12sqm.

Excellent security, airconditioning use of boardroom etc.

Other features include high frequency bus service to CBD and Mount Lawley cafe strip in close proximity.

The above information provided has been furnished to us by the vendor/s. We have not verified whether or not that information is accurate and do not have any belief in one way or the other in its accuracy. We do not accept any responsibility to any person for its accuracy and do no more than pass it on. All interested parties should make and rely upon their own inquiries in order to determine whether or not this information is in fact accurate.

 1

Price \$10140 Per Annum Plus Outgoings Plus GST

Property Type Commercial

Property ID 15557

Office Area 30 m2

Agent Details

Larry Gallagher - 0418 946 357

Office Details

Xceed Real Estate - Commercial Leasing & Sales
Level 8, 3 Hasler Road Herdsman, WA, 6017 Australia
08 9207 2088

XCEED 
REAL ESTATE