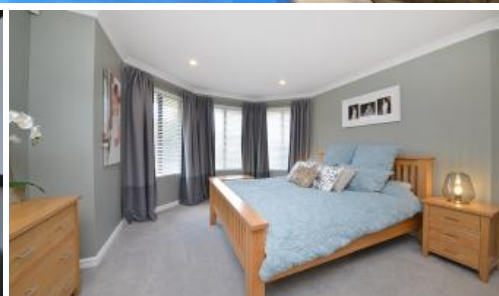


Sold



19 Lynnburn Pass, Carramar



HOME OPEN SUN 3rd APRIL .1.00PM – 1.30PM

Andrew and Liselle from Team Thompson have the pleasure in presenting 19 LYNNBURN PASS CARRAMAR

Fully renovated 4 x 2 family home with spacious open plan living, enclosed home theatre, separate gamesroom and study/activity, all with an outdoor pitched patio entertaining overlooking fully fenced, extra deep below ground pool

Set amongst quality homes and close to all amenities this immaculately presented family home is sure to impress

Please contact us if you require any further information

Set in an awesome location close to schools, shops and parks

Solid feature door front entry

Spacious master bedroom with extra large WIR with inbuilt shelving and TV point

Modern ensuite with corner shower (with screen), corner spa, his and her vanity, stylish porcelain tiles and plenty of room to move

4 2 2

**Price**

SOLD

**Property Type**

Residential

**Property ID**

12571

**Agent Details**

Jonathan Marlow - 08 9402 2299

**Office Details**

Xceed Real Estate - Sales  
Level 8, 3 Hasler Road Herdsman,  
WA, 6017 Australia  
08 9207 2088

**XCEED** **REAL ESTATE**

Bedrooms 2, 3 and 4 are double in size with mirrored sliding door robes

Renovated modern 2nd bathroom with walk in shower and stylish fixtures and fittings

Activity room located amongst the minor bedrooms

Enclosed home theatre with room for the whole family

Fully renovated kitchen with stone benchtops, Bosch appliances, twin oven/microwave, electric hotplate, feature glass splashbacks, integrated dishwasher, fridge/freezer recess, ample cupboards and bench space and finished with quality fixture and fittings

Spacious open plan meals and living room with inbuilt wood fire

Separate games room with feature double French doors and sliding door access to outdoor entertaining

Ducted air-conditioning

Immaculate presentation through out with a neutral colour scheme complimented by quality lights, window treatments, window sills and skirtingboards

Extra large pitched patio entertaining with a raised decked area surrounded by tropical gardens and feature walls

Extra deep below ground pool with glass fencing and gorgeous water feature

Double garage with internal access to kitchen

Built in 2004 (tbc)

Block size 612m2

*The above information provided has been furnished to us by the vendor/s. We have not verified whether or not that information is accurate and do not have any belief in one way or the other in its accuracy. We do not accept any responsibility to any person for its accuracy and do no more than pass it on. All interested parties should make and rely upon their own inquiries in order to determine whether or not this information is in fact accurate.*