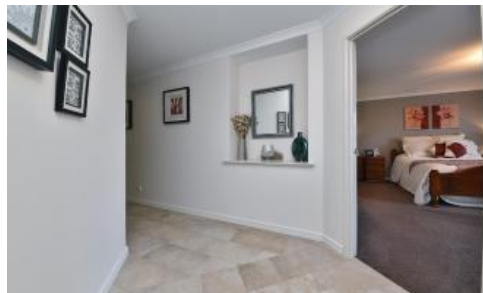


Sold



5 Hopewell Pass, Carramar



4 BEDROOM – 3 BATHROOM FAMILY HOME ON A 670M2 BLOCK SIZE

Andrew and Liselle from Team Thompson have the pleasure in presenting 5 HOPEWELL PASS CARRAMAR

This extra large (254m2 internal living space) family home features 4 extra large bedrooms, 3 modern bathrooms, spacious living areas, separate home theatre, separate gamesroom, activity/study and all with an immaculate attention to detail through out

Step outside to an easy care entertaining with fully fenced below ground pool and separate synthetic lawn area for kids to play

Add to all this a triple car lock up garage with drive through access to back yard

Please call to view anytime

Modern frontage with triple car garage extra wide driveway for parking and easycare low maintenance gardens

Feature double door entrance with security screens into separate foyer area
Spacious master bedroom with parents retreat and large his and her's separate W.I.R

Expansive ensuite with extra deep spa bath, twin shower with glass screen, full width mirror, twin vanities and all with ample room to move

Separate activity room conveniently located within the minor bedrooms with full length triple sliding door storage cupboard

Bedrooms 2 comes with double sliding door robes and its own bathroom with

🛏 4 🚿 3 🚗 3 📏 670 m2

Price	SOLD
Property Type	Residential
Property ID	17057
Land Area	670 m2

Agent Details

Jonathan Marlow - 08 9402 2299

Office Details

Xceed Real Estate - Sales
Level 8, 3 Hasler Road Herdsman,
WA, 6017 Australia
08 9207 2088

XCEED 
REAL ESTATE

shower (with glass screen) twin vanities, bench and cupboards
3, and 4 are all double in size with double sliding door robes
Superb 3rd bathroom with bath, shower (with glass screen) and stylish vanity
Laundry located off the kitchen area comes with inbuilt bench and cupboards
and its own powderroom
Splendid kitchen with extra large free standing oven and
hotplates, rangehood, tiled splashbacks, fridge/freezer recess, microwave
recess, dishwasher, double door pantry and all with plenty of bench and
cupboard space
Spacious open plan meals and living areas
Separate lounge / media room
Gamesroom with sliding door access to outdoors and commanding views to
outdoors
High ceilings through out
Full reverse cycle air-conditioning through out
Modern fixtures and fittings t/out including floorcoverings, skirting boards,
window treatments, window sills, feature doors and lighting
Full length outdoor patio entertaining area with café blinds
Fully fenced below ground pool
Separate play area with easy care synthetic lawn
Outdoor shed
3kw solar panels to the roof
Home security system
Triple lockup garage with roller door drive through access to backyard
Built in 2008
Block size: EXTRA LARGE 670m2

The above information provided has been furnished to us by the vendor/s. We have not verified whether or not that information is accurate and do not have any belief in one way or the other in its accuracy. We do not accept any responsibility to any person for its accuracy and do no more than pass it on. All interested parties should make and rely upon their own inquiries in order to determine whether or not this information is in fact accurate.